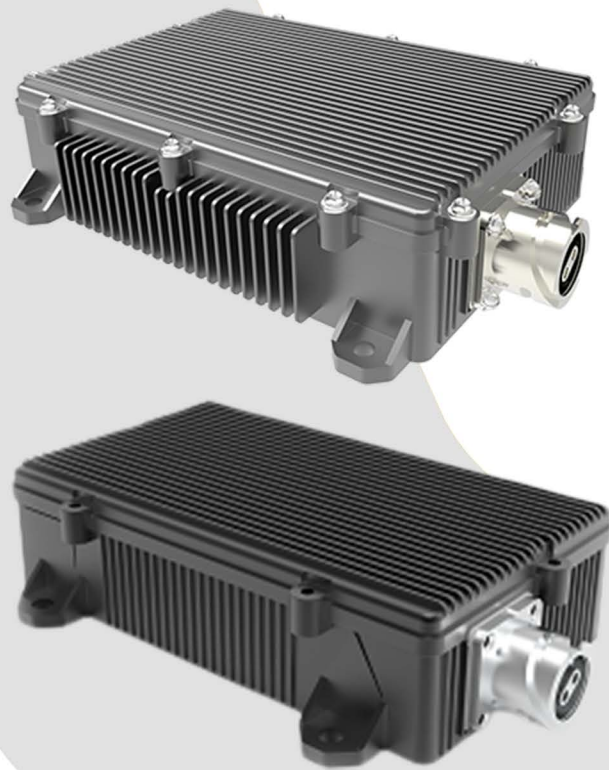


# GRASEN DC DC Converter

## Transform Voltage Unleash Power



### High Efficiency

Work stably within voltage range 200-800V, can withstand up to 1000V input surge, and has a full load efficiency of more than 90%.



### BMS 24h Monitoring

Sleep power consumption <60mW. It can be used directly on the battery for a long time to ensure that the battery will not lose power.



### Durable

The internal components meet the 8-year working requirements with an MTBF of over 120,000 hours.



### Reliable

Specially designed for commercial vehicle BMS, seismic and impact resistant. IP67 high protection level for various working conditions.

### Benefits

- 200~800V input, 12V/24V output
- Withstand up to 1000V input surge
- Sleep mode with power consumption <60mW
- Integrated circuit supporting CAN wakeup and VCU hardwire wakeup

### Application Area

- Low-voltage DC power supply
- Switching power supply for 12V/24V BMS
- Other LV power supply electrical equipment

## Technical Specifications

Item	Model	300W 12V	300W 24V
Input	Auxiliary Power Consumption	540VDC	
	Input Voltage Range	200VDC~800VDC	
	Max Input Current	<2A	
	Sleep Power Loss	≤60mW	
	Auxiliary Power Consumption	≤4W	≤5W
	Standby Power Consumption	≤10W	≤15W
Output	Output Voltage	12V±0.5VDC	24V±0.5VDC
	Output Current Range	0~25A	0~12.5A
	Output Power	300W	
	Full Load Efficiency	≥ 90%	≥ 92%
	Temperature Coefficient	≤ ±0.02%	
	Soft Start Time	≤ 2.5S	
Mechanical	Dimension(L x W x H)	204mm*143mm*46mm	204.8mm*129mm*45mm
	Weight	<1.5kg	
Protection	Protection Features	Over-voltage, Under-voltage, Over-current, Overheating, Output short circuit	
Reliability	MTBF	120000h	

\*Please note that this is preliminary data—the final product and data are subject to change.

## Output Characteristic Curve

